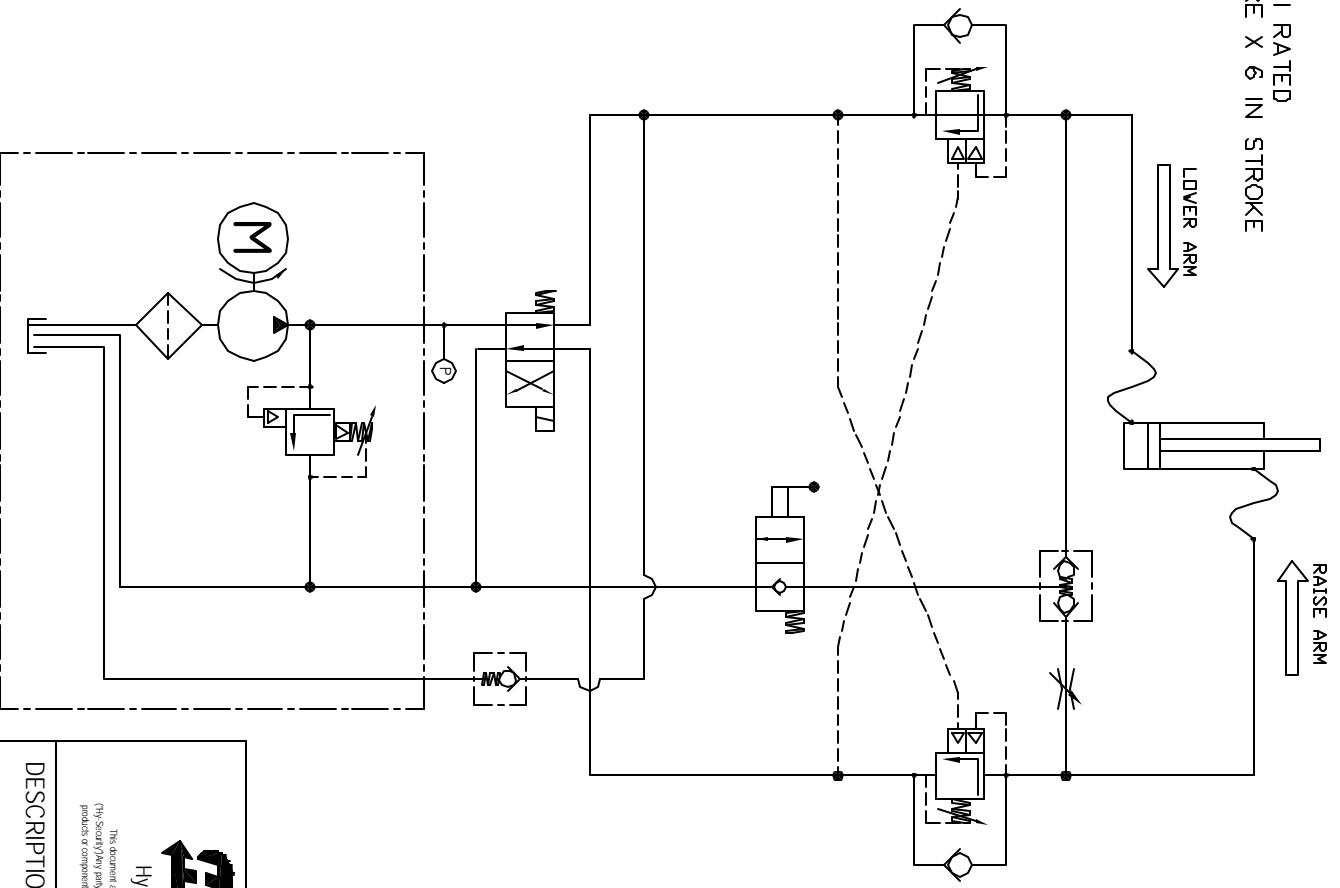
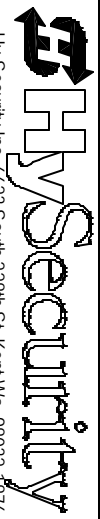


3,000 PSI RATED
2 IN BORE X 6 IN STROKE




HySecurity
 HySecurity Inc. 6623 South 228th St. Kent Wa. 98032-1876
PROPRIETARY INFORMATION OF HY SECURITY GATE INC.
 The document and the information contained therein, are the confidential, proprietary, and trade secret information of HySecurity Gate Inc. (HySecurity) and are not to be disclosed, copied, or otherwise used by any person without the express prior written consent of HySecurity. (HySecurity) may be copying, adapting or retaining the document, any information contained herein, as may be required to manufacture products of components for HySecurity and are not to be disclosed, copied, or otherwise used by any person without the express prior written consent of HySecurity.

DESCRIPTION

STRONG ARM

ECN NO:	REV	CHANGE DESCRIPTION	REV BY	REV DATE	PART NO:	SHEET 1 OF 1
D0026						