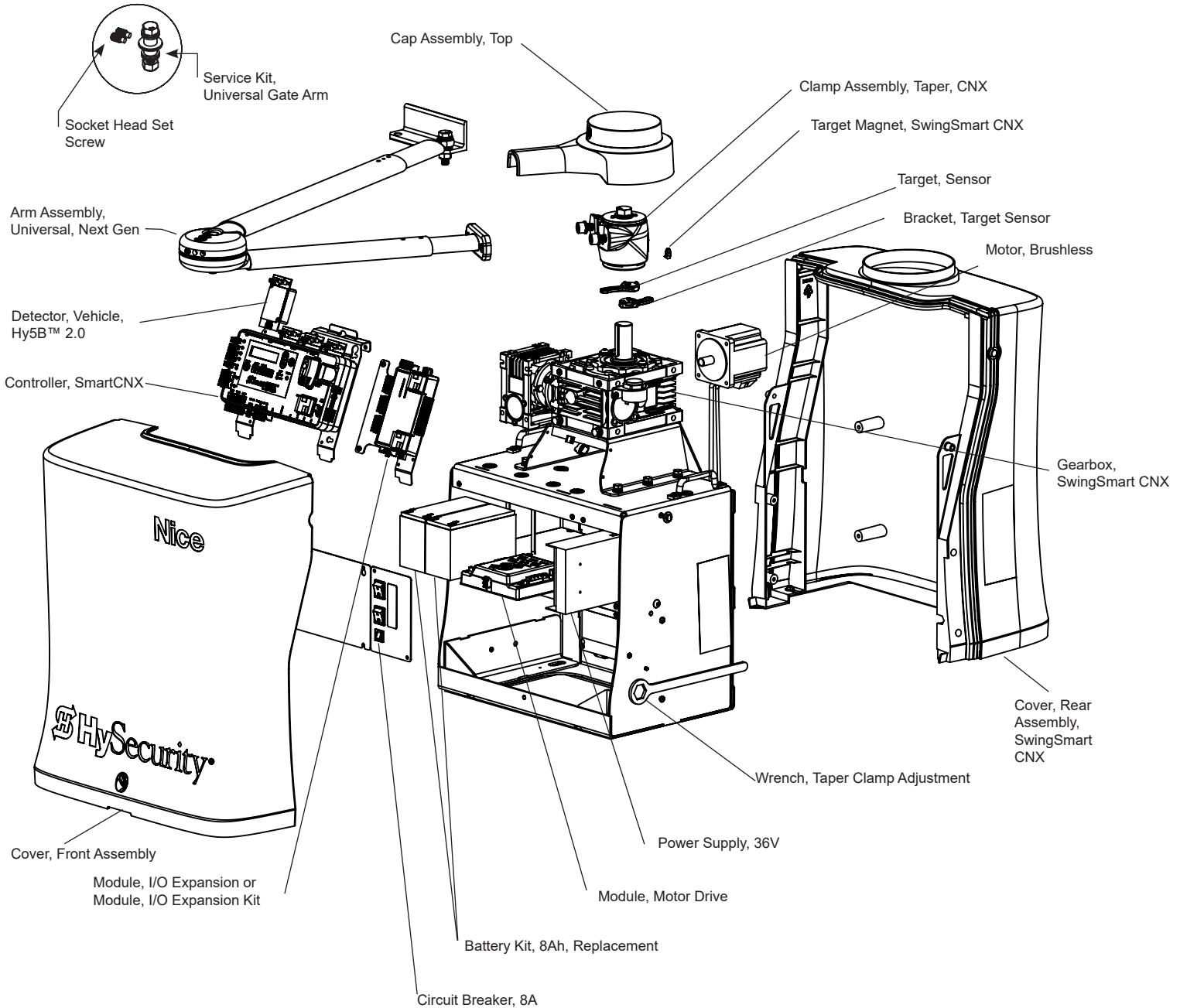




SwingSmart CNX 20 Chassis, Mechanical & Electrical





SwingSmart CNX 20 Chassis, Mechanical & Electrical

| Part Name | Part Number | SwingSmart CNX Models |
|--------------------------------------|-------------|-----------------------|
| Arm Assembly, Universal, Next Gen | MX4005 | all |
| Battery Kit, 8Ah, Replacement | MX002008 | all |
| Bracket, Target Sensor | MX4004 | all |
| Cap Assembly, Top | MX4365 | all |
| Circuit Breaker, 8A | MX4613 | all |
| Clamp Assembly, Taper, CNX | MX3930 | all |
| Controller, SmartCNX | MX4345 | all |
| Cover, Front Assembly | MX4465 | all |
| Cover, Rear Assembly, SwingSmart CNX | MX4460 | all |
| Detector, Vehicle, Hy5B™ 2.0 | MX4621 | all |
| Gearbox, SwingSmart CNX | MX4624 | all |
| Module, I/O Expansion | MX4347 | all |
| Module, I/O Expansion Kit | MX4410 | all |
| Module, Motor Drive | MX4285 | all |
| Motor, Brushless | MX4407 | all |
| Power Supply, 36V | MX4409 | all |
| Service Kit, Universal Gate Arm | MX4535 | all |
| Socket Head Set Screw | MX3890 | all |
| Target Magnet, SwingSmart CNX | MX4265 | all |
| Target, Sensor | MX4329-03 | all |
| Wrench, Taper Clamp Adjustment | MX4438 | all |